



HIGH PRECISION  
**TOOLS & DIES**

[matrix-sa.com](http://matrix-sa.com)

Grow Your Business  
**With Us**

# FROM THE HEART OF THE PYRENEES

*Matrix was founded by S&P Group in Ripoll in 1974 in the heart of the Pyrenees*

Ripoll is located just 80 minutes' drive from Barcelona, a well known region for its history, gastronomy, nature and mountains where you can enjoy the entire year whether hiking through the valleys or skiing during winter time.

Matrix is a company with an extension of 4.300m<sup>2</sup>, 105.000 capacity hours per year, and entirely climate-controlled, dedicated to designing and manufacturing high precision progressive dies, and it has a workforce of 65 workers. Our Know-how and experience over the last 40 years enable us to provide our customers with the most complex projects and the best optimal stamping solutions.

CULTURE  
HISTORY  
**NATURE**  
GASTRONOMY



C26, km 195  
17500, Ripoll  
Spain



80' from Barcelona



80' from Barcelona airport  
70' from Girona airport



60' from beach  
30' from snow



## OUR **VISION**

---

Provide press tools solutions to our customers in order to improve their manufacturing time, costs, energy and efficiency

## OUR **MISSION**

---

Provide individualized treatment according to customer needs, not only our goal, "It is our duty"

# MEET OUR TEAM

---



**JORDI COSTA**  
Plant Manager



**RAMÓN ALTARRIBA**  
Technical &  
Commercial Manager



**AGUSTÍ CHINCHILLA**  
Head of engineering



**JOSEP SITJAR**  
Production Manager



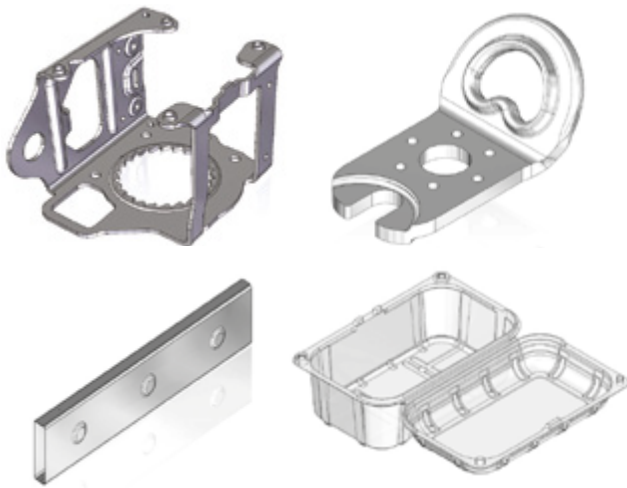
# OUR SERVICES

---

We are a long-term partner, for this reason we offer our customers complete services and solutions, from designing your product to delivering it. All our products meet the approval requirements of the current market

---

## PRODUCT DESIGN



## DIES ENGINEERING



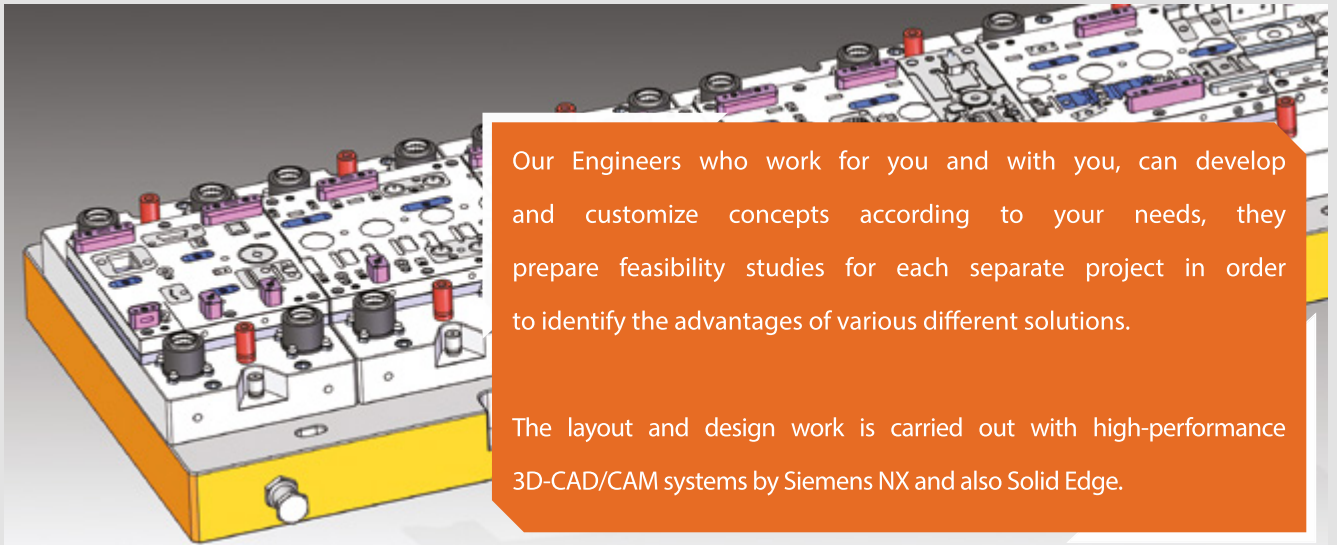
## ACCEPTANCE TRIALS



## QUALITY REPORTS

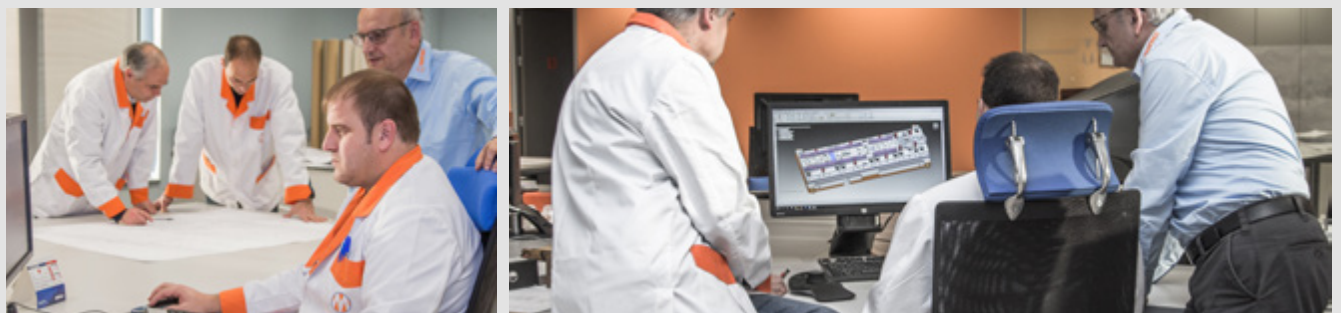


# ENGINEERING



Our Engineers who work for you and with you, can develop and customize concepts according to your needs, they prepare feasibility studies for each separate project in order to identify the advantages of various different solutions.

The layout and design work is carried out with high-performance 3D-CAD/CAM systems by Siemens NX and also Solid Edge.





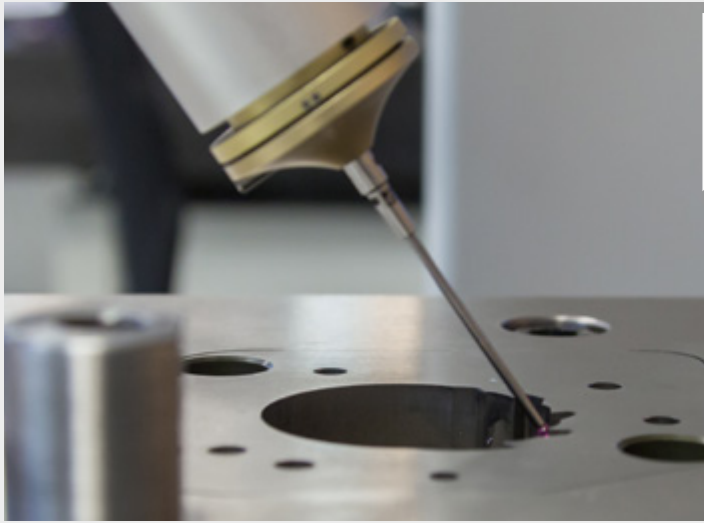
# PRODUCTION



We work for you on a three-shift basis with flexible, automated manufacturing cells. Matrix works with:

- JIG grinding machine with CNC Hauser
- JIG boring machine with CNC Yasda
- 5-axis CNC milling machines DMG
- 3-axis CNC High speed hard milling with pallet changer system Makino
- 3-axis work center Okuma
- 4-axis CNC lathes with robot feed DMG
- Wire EDM Agie Charmilles
- Vertical EDM with 6-axis robot and integrated CMM cell
- High precision CNC cylindrical grinding Studer

# QUALITY DEPARTMENT



During die manufacturing time, our quality department assures the steel dimensions of every sampling step to meet your requirements, in terms of final piece performance and process consistency.

On the other hand, our quality team also measures the final parts produced during the press die trials providing you with the full dimensional report, using the most advanced and updated CMM and quick vision equipment.





# PRESS DIE TRIALS



After production and assembly, we carry out your stamping trials to make sure the die functions perfectly at a maximum level. At Matrix toolshop, we have our own press machine with press forces up to 400t. We can test stamping dies with dimensions up to 2700mm x 800mm.

Expert operators do comprehensive reliable tryouts. In order to achieve the maximum optimization of the final product, so that we can reach the best possible performance. As a result we aim at reducing production time at your facilities.



# OUR TECHNOLOGIES

In the wide-ranging field of dies making for the press industry, we are your innovative partner. Matrix is an experienced producer of high performance dies made of high quality steel or Tungsten carbide, capable of cutting with great precision with the most resistant materials.

We can provide progressive dies to handle thickness from 4mm to 0,02 mm

Matrix also supplies perimeter cutting presses, cuttering punched dies and hole piercing dies. We can introduce automatic stacking with skeweeing and rotation solutions.

Matrix is a premium  
technical partner of

**BIHLER**

## AUTOMOTIVE



## ELECTRICAL PARTS





## FOOD PACKAGING



## MEDICAL







matrix-sa.com



/matrix-sa



@matrixsolutions



Matrix SA

📍 Ctra. C-26, km 195  
17500 Ripoll · Spain

42°13' 7.74"N · 2° 12' 42.80"E



+34 972 70 03 58

@ info@matrix-sa.com

